



Values Education

Our value for December is:

PATIENCE



MESSAGES, FEEDBACK AND REFLECTIONS FROM THE HEAD

It's been as busy as ever this week at Laburnum. We have had two educational visits this week. Cedar Class visited the Shuttleworth Collection as part of their journeys topic – they got to see lots of different vehicles of different ages and designs and represented the school fantastically. Apple & Beech Classes visited the animals at Mead Open Farm – not only did they get to make a soft toy, but they also brought home an additional gift and got to meet Father Christmas. The children, staff and parents that visited all had a fantastic time and came back tired but smiling.

The staff have also been busy, with various different trainings taking place, including a number of staff updating our paediatric first aid qualifications. Mrs Boyall and I have both met with representatives from the Local Authority to support the shaping of the vision for SEND in the LA, both offering our views on the positives, but also the barriers to support that are in place within the Local Authority SEND team and NHS services. We hope that by being part of that group our views will contribute to an improvement in support for SEND pupils.

Mrs Dawes has continued her Department for Education funded training as Mental Health lead, which is proving useful and is already supporting us in enhancing our experience and support for mental health across the school.

We have also had it confirmed this week that, following an application from our Maths Lead, Mrs Watts, we have been selected as one of only 50 schools to take part in an exciting Maths professional development research project in Early Years and Year 1, funded by the Education Endowment Foundation in conjunction with Oxford University, the University of York and Durham University. This project will further support our efforts to mitigate the significant impact the pandemic has had on the education of all children.



COVID-19 UPDATE

As usual I have included the CBC COVID-19 summary. The major headline this week is that new cases of COVID-19 in Central Bedfordshire have gone up by 445 to 2,179, the highest number ever recorded here (740.9 cases per 100,000) with rates currently highest among **5–10-year-olds** and 40–49-year-olds. Please continue to do everything you can to reduce contact and transmission. We want your children to stay in school and to have a great Christmas.

PARENT CODE OF CONDUCT

You will have seen the item in a recent newsletter reminding parents that it is an expectation that all staff are communicated with respectfully and appropriately, whether in person, on the telephone or via email/Class Dojo. Very sadly, this is not always the case and therefore senior leaders and governors have created and approved the attached Parent Code of Conduct. Whilst the vast majority of parents always communicate appropriately, this is not always the case and the attached Code of Conduct details expectations, behaviours that will not be tolerated and the potential consequences of breaching the Code of Conduct.

FREE CHRISTMAS HOLIDAY CLUBS AND ACTIVITIES

Central Bedfordshire have organised a range of holiday activities for children entitled to free school meals as part of the government funded HAF project. We are hosting a multi-active club at Laburnum, but there are a range of activities available. Copy the links from the poster later in the newsletter to find out more and to book your child in for activities in the first week of the Christmas Break.

HOUSE POINTS THIS WEEK

Seacole	Pankhurst	Gandhi	Churchill
 248	 235	 220	 221

ATTENDANCE

Beech	97.3%	0 late marks
Elm	93.3%	0 late marks
Cedar	97.8%	0 late marks
Chestnut	91.7%	2 late marks
Willow	97.3%	6 late marks
Sycamore	97.6%	3 late marks
Oak	93.3%	0 late marks

Attendance figures do not include any absences due to COVID-19 self-isolation / awaiting test results.

Attendance Target: 97%

THE GOLDEN MILE

Well done to all of the classes who kept running despite the cold and wet weather!

The winning classes were:

EYFS & KS1

Cedar

KS2

Oak

VALUES CHAMPIONS

Apple:	Toby & Keiran
Beech:	Everly
Elm:	Jake
Cedar:	Meredith
Chestnut:	Ruby
Willow:	Jake
Sycamore:	Eden
Oak:	Aaron

CONGRATULATIONS!

CLASS DOJO

Messages sent to families

553

457 Last week



Photos and videos shared

110

57 Last week



Positive feedback %

100%

100% Last week



LABURNUM PRIMARY SCHOOL

Laburnum Road, Sandy, SG19 1HQ

T: 01767 680691/07948 026230

E: office@laburnumlower.co.uk

W: www.laburnumlower.co.uk

Page 2 | 7



UPCOMING DATES

DECEMBER

Thursday 16th School Christmas Dinner Day

Friday 17th Break Up for Christmas Break

JANUARY

Wednesday 5th Spring Term Begins – YR-6 Return to School
Nursery New Starter 1:1 visits

Thursday 6th Nursery Return to School

Friday 21st Year 6 to Young Voices Concert London O2

Monday 31st January Year 5 & 6 Bikeability

FEBRUARY

Monday 7th – Friday 11th Children's Mental Health Week: CHUMS SHINE BRIGHT WEAR BRIGHT

Friday 11th Break Up for Half Term

Monday 21st 2nd Half of Spring Term Begins – All pupils return to school

Monday 28th Feb – Wednesday 2nd Mar Year 4 to Burwell House (residential visit)

MARCH

Thursday 3rd World Book Day

Tuesday 8th Year 1 visit to Cambridge Botanic Gardens

Thursday 10th Year 5 to visit West Stowe

Friday 18th Comic Relief – Red Nose Day

Thursday 24th FLS Special Ladies Afternoon Tea

Monday 28th Year 4 Bikeability

APRIL

Friday 1st Break Up for Easter Break

Wednesday 20th Summer Term Begins – YR-6 Return to School
Nursery New Starter 1:1 visits

Thursday 21st Nursery Return to School

MAY

Monday 2nd May Day Bank Holiday

All of May Year 2 KS1 Assessments

Tuesday 3rd Class Photographs

Monday 9th - Thursday 12th Year 6 KS2 SATS

Monday 23rd – Friday 27th Year 6 to PGL Caythorpe Court (residential visit)

Friday 27th Break Up for Half Term

JUNE

Monday 6th 2nd Half of Summer Term Begins – All pupils return to school

Monday 6th – Friday 10th Year 1 Phonics Check Week & Year 4 Multiplication Check Period

Friday 17th Father's Day Breakfast

Thursday 30th June – Friday 1st July Year 3 Overnight Camp (School Field)

JULY

Friday 1st – Saturday 2nd Year 5 to National Space Centre (overnight stay)

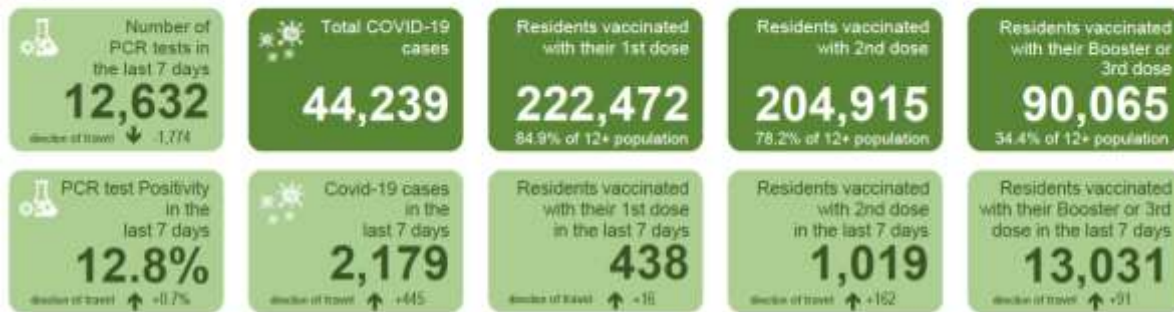
Saturday 9th FLS Summer Fayre

COVID-19 Snapshot

As of 8th December 2021 (data reported up to 5th December 2021)

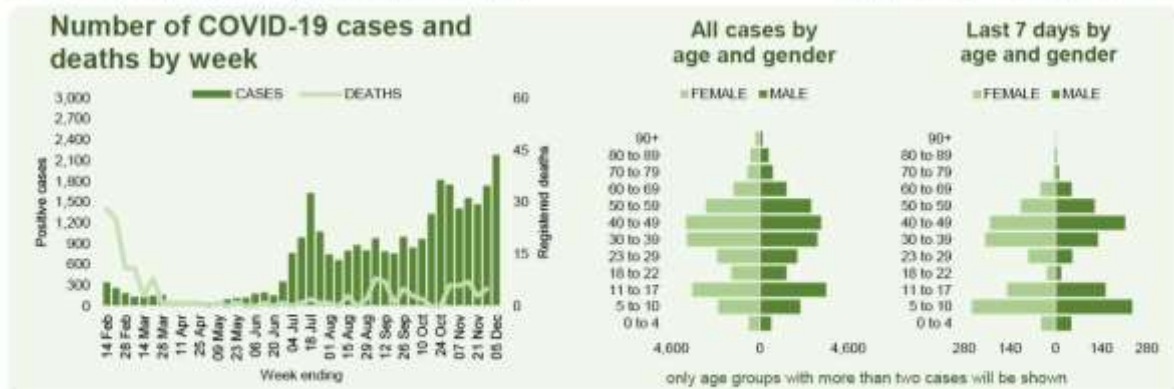
Central Bedfordshire

Population 294,096



Direction of travel compares current snapshot against previous snapshot

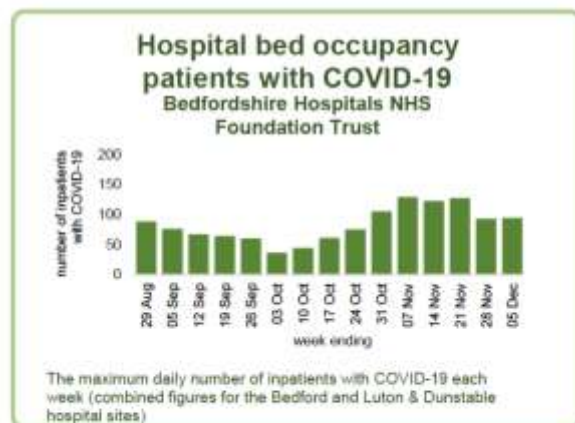
key: ↑ Increasing ● no change ↓ decreasing



Most affected wards in the last 7 days

Ward	Number of cases last 7 days	Direction of travel	Rate per 1,000 population last 7 days	Rate per 1,000 population all cases
Amphill	180	↑	13.0	166.4
Stotfold and Langford	180	↑	11.0	146.1
Flitwick	167	↑	11.9	145.2
Leighton Buzzard South	130	↑	8.3	154.3
Linslade	116	↑	9.5	125.8
Biggleswade South	110	↑	9.4	156.1
Cranfield and Marston Moretaine	100	↓	6.1	147.8
Arlesey	96	↓	5.8	142.7
Leighton Buzzard North	84	↑	5.5	136.4
Biggleswade North	72	↑	6.9	165.5
Dunstable-Northfields	69	↑	6.3	171.2
Dunstable-Watling	67	↑	7.1	149.1
Sandy	67	●	4.9	144.1
Houghton Hall	66	↑	7.1	162.2
Toddington	63	↑	6.3	144.9
Silsoe and Shillington	62	↑	10.5	147.5
Barton-le-Clay	61	↑	12.3	172.4
Shefford	54	↓	5.0	161.3
Dunstable-Icknield	52	↓	5.7	172.5
Westoning, Flitton and Greenfield	41	↑	8.5	162.7
Dunstable-Manshead	40	↑	7.0	167.7
Heath and Reach	39	↑	8.6	166.8
Caddington	39	↓	3.9	144.9
Potton	37	●	4.4	142.5
Northill	31	↓	6.9	125.7
Parkside	30	↑	5.5	153.2
Dunstable-Central	28	↑	4.8	146.5
Eaton Bray	26	↑	5.7	116.9
Houghton Conquest and Haynes	24	↑	7.2	170.8
Aspley and Woburn	24	↑	4.9	108.0
Tilth Farm	24	↓	4.7	156.0

only wards with more than two cases will show last 7 days detail
direction of travel (DOT) compares current snapshot against previous



Free Christmas Holiday places

In Central Bedfordshire

School Holiday Activities & Childcare, open to children on benefit related Free School Meals as part of the 'Holiday Activities and Food' programme

20th-23rd Dec
9am-3pm

How to register:

Step 1

Find out if you are eligible and register at:
<https://www.centralbedfordshire.gov.uk/school-hols-food>

Once registered you will receive a unique code

Step 2

Book your place with Multi-Active and enter your unique code when booking
<https://www.multi-active.co.uk/multi-active-central-beds-haf>

Running in
Biggleswade
Sandy
Flitwick



WWW.MULTI-ACTIVE.CO.UK

TEL:01462 - 351582

LABURNUM PRIMARY SCHOOL

Laburnum Road, Sandy, SG19 1HQ

T: 01767 680691/07948 026230

E: office@laburnumlower.co.uk

W: www.laburnumlower.co.uk

Page 5 | 7



Free for our members

Please email admin@snappcf.org.uk
to request your free Max Card.

If you are not already a member we will send you a link
to our membership form.

Membership is open to parent carers who have a child
or young adult with any Special Need and/or Disability
(SEND) aged between 0-25 years of age who live in
Central Bedfordshire



maxcard

The max card is designed to make days out more financially accessible
for foster families and families of children with additional needs.
We believe in creating memories, with the help
of supporting local authorities and venues, we aim to
bring families closer together through fun and enjoyable days out.



Free or discounted entry
To these great attractions;



And many more

See our website www.snappcf.org.uk for further details

LABURNUM PRIMARY SCHOOL

Laburnum Road, Sandy, SG19 1HQ

T: 01767 680691/07948 026230

E: office@laburnumlower.co.uk

W: www.laburnumlower.co.uk





Living Well With Pain Workshop



Living with pain can have a significant impact on our mood, motivation and energy levels. It can be common to feel low due to the recurring pain which we experience. If you are experiencing chronic pain, why not attend our workshop for some useful helps and tips

FRIDAY 17TH DECEMBER AT 10.30AM - 11.30AM

This workshop will cover:

PAIN:

Looking at the CBT model, pain cycle and deconditioning

BOOM AND BUST CYCLES:

Finding ways to manage energy and pain levels

RELAXATION TECHNIQUES:

Going through relaxation techniques that can help manage symptoms

To book on to this, please register by filling this form: <https://forms.office.com/r/K0zqjtMpsd>



<https://www.eventbrite.co.uk/e/supporting-children-with-angry-feelings-tickets-209832914897>

